

# Active Pulsation Dampeners



## CF-X40 Model

### 1½" Pulsation Dampener Data Sheet

Fully automatic operation with self adjusting speed & pressure control.

*For improved flow, accuracy & surge control in metering, dosing, blending, mixing, spraying, filling or important process applications.*

*Reduces liquid pulsation, liquid surge, foaming & splashing.*

*Helps to protect the Pump, Pipes, Fittings and Process Machinery from problems caused by pulsation, vibration, thermal expansion, hydraulic shock, water-hammer & cavitation.*



**CF-X40G**  
1½" PPG Dampener

### 40 Pulsation Dampener Specifications

Model / Material	A <input type="checkbox"/> S <input type="checkbox"/> F <input type="checkbox"/>	AT/AW ST/SW FT/FW	G <input type="checkbox"/> V <input type="checkbox"/>
Liquid Port / Air inlet	Rc 1½ [NPT 1½] / 1/8" Rc Air inlet		
Operating Pressure *1	0 - 0.85 MPa [0 - 125 psi]	0 - 0.7 MPa [0 - 100 psi]	
Max. Discharge Pressure	0.85 MPa [125 psi]	0.7 MPa [100 psi]	
Max. Air Consumption	20 l/min (ANR) [0.70 SCFM]		
Max. Solid Size	8 mm or less		
Ambient Temp. Range	0 - 70°C [32 - 158°F]		
Liquid Temp. Range	*2		0 - 60°C [32 - 140°F]

\*1 Max. applied air pressure of the plastic dampener depends on the liquid temperature.

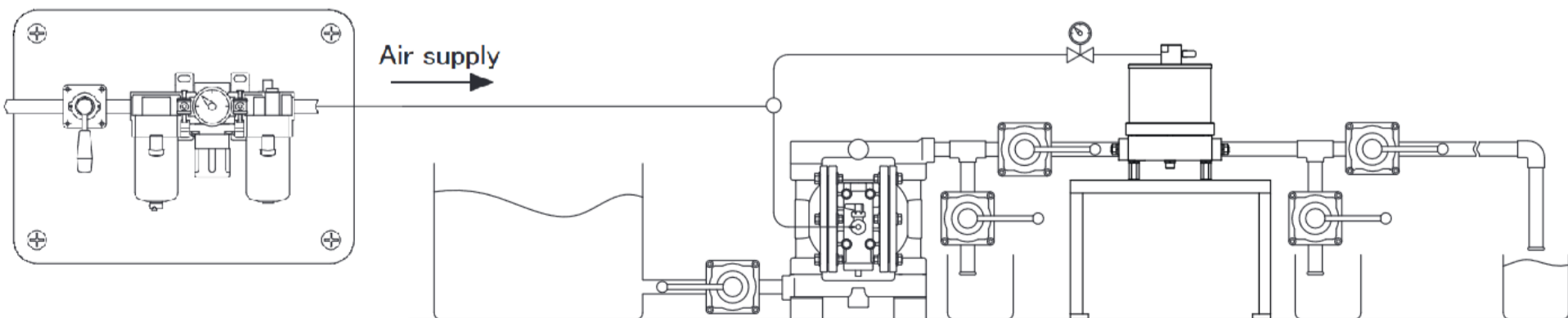
\*2 Diaphragms NBR/CR 0 - 70°C [32 - 158°F] TPEE/EPDM 0 - 80°C [32 - 176°F] FKM/TPO/PTFE 0 - 100°C [32 - 212°F]

### Wetted Materials Of Construction

CF-X40	AC	AN	AE	AV	AT	AH	AS	AW	SC	SN	SE	SV	ST	SH	SS	SW
Dampener wetted Parts	ADC12								SCS14							
Diaphragm	CR	NBR	EPDM	FKM	PTFE	TPEE	TPO	PTFE-EPDM	CR	NBR	EPDM	FKM	PTFE	TPEE	TPO	PTFE-EPDM
O-ring	NBR	NBR	EPDM	FKM	PTFE	NBR	EPDM	PTFE	NBR	NBR	EPDM	FKM	PTFE	NBR	EPDM	PTFE
Center Disk	SUS316								SUS316							
Weight	22.0kg (48.5 lbs)								32.0kg (70.6 lbs)							

CF-X40	FC	FN	FE	FV	FT	FH	FS	FW	GC	GN	GE	GV	GT	GH	GS	GW	VT	VS	VW	
Dampener wetted Parts	S45C								PPG								PVDF			
Diaphragm	CR	NBR	EPDM	FKM	PTFE	TPEE	TPO	PTFE-EPDM	CR	NBR	EPDM	FKM	PTFE	TPEE	TPO	PTFE-EPDM	PTFE	TPO	PTFE-EPDM	
O-ring	NBR	NBR	EPDM	FKM	PTFE	NBR	EPDM	PTFE	NBR	NBR	EPDM	FKM	PTFE	NBR	EPDM	PTFE	PTFE	EPDM	PTFE	
Center Disk	SUS316								PPG								PVDF			
Weight	32.0kg (70.6 lbs)								21.0kg (46.3 lbs)								23.0kg (50.7 lbs)			

### Installation Layout Sample



\*Install the dampener within 1 m from pump discharge port.

\*Required minimum pump discharge pressure of 0.1 MPa to make the dampener efficiency.

\*Set the supply air pressure to the reference level of "pump discharge pressure x 1.1" by using the regulator connected to the dampener and make a fine adjustment in the range of ± 0.05MPa while checking the pulsation as required.

For more information about TC-X Pumps please contact: [sales@iwaki.de](mailto:sales@iwaki.de)

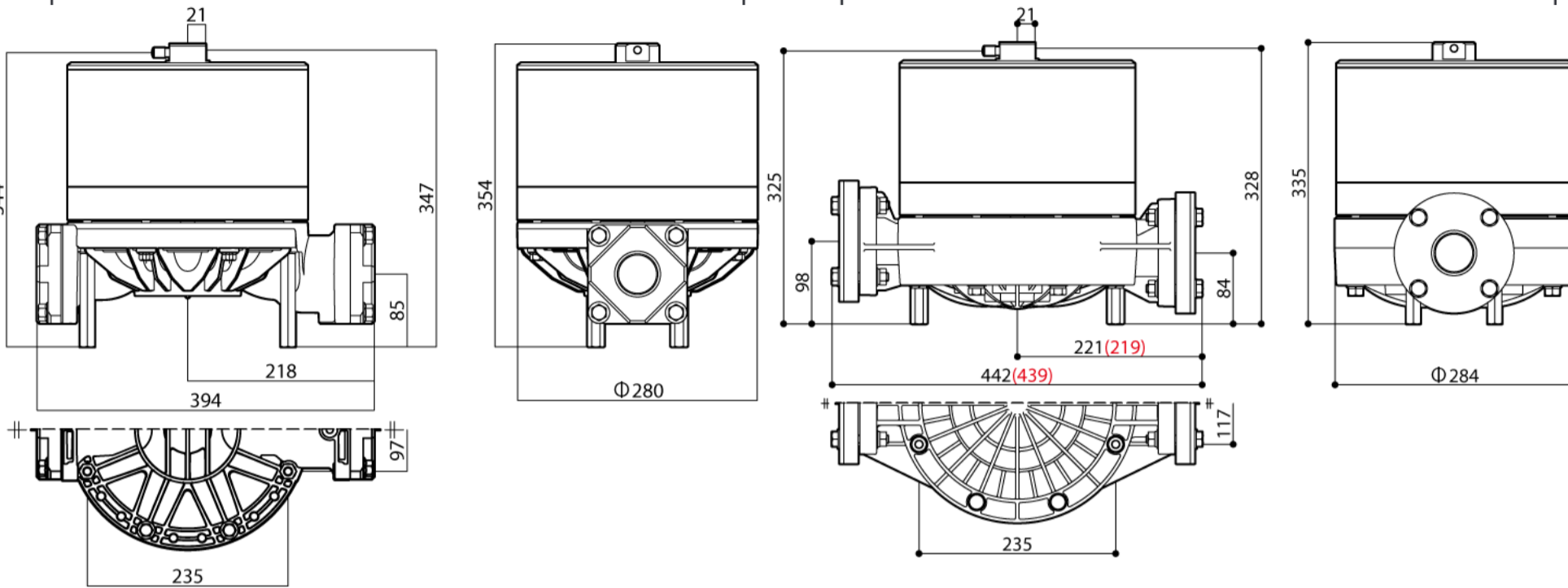
[WWW.IWAKI.DE](http://WWW.IWAKI.DE)

# Active Pulsation Dampeners

## Dimensional Drawings

40A □ [40A □ N] • 40S □ [40S □ N]

40G □ [40G □ N] • 40V □ [40V □ N]



## Nomenclature

Series --- CF-X    40    S    T    -    X --- Special Options

Connection Size  
40 (1½")

Pump Body Material (Wetted)  
A: Aluminum  
S: Stainless Steel  
F: Cast Iron  
G: Glass Filled PP  
V: Carbon Filled PVDF

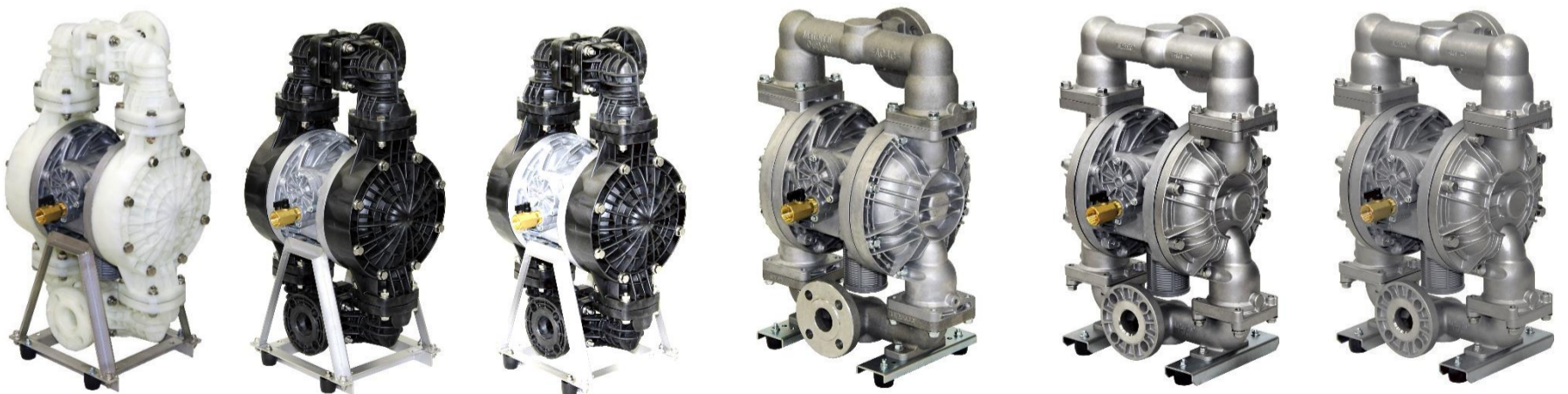
Diaphragm Material  
C: CR  
N: NBR  
E: EPDM  
V: FKM  
T: PTFE  
W: PTFE-EPDM  
H: TPEE  
S: TPO

Connection Type  
□: Rc  
N: NPT



**P40S** □  
1½" Stainless Dampener

## Applicable Pumps



Series TC-X400

## AODD Pump Capabilities

- |                     |                              |                               |
|---------------------|------------------------------|-------------------------------|
| Self Priming        | Variable Discharge Pressures | Inherently Safe Design        |
| Run Dry             | Transfer Liquid Slurries     | Portable & Easy to Use        |
| Run up to Dead Head | Transfer Large Sized Solids  | Transfer Viscous Fluids       |
| Variable Flow Rates | Handle Abrasives             | Frequent Start Stop Operation |
| Shear Sensitivity   | Transfer Chemicals           | Powered by Compressed Air     |



Ex II2G ExhIIBT5Gb 0°C<Ta<70°C  
II2D ExhIIIBT100°CDb 0°C<Ta<70°C

For more information about TC-X Pumps please contact: [sales@iwaki.de](mailto:sales@iwaki.de)  
[WWW.IWAKI.DE](http://www.iwaki.de)

